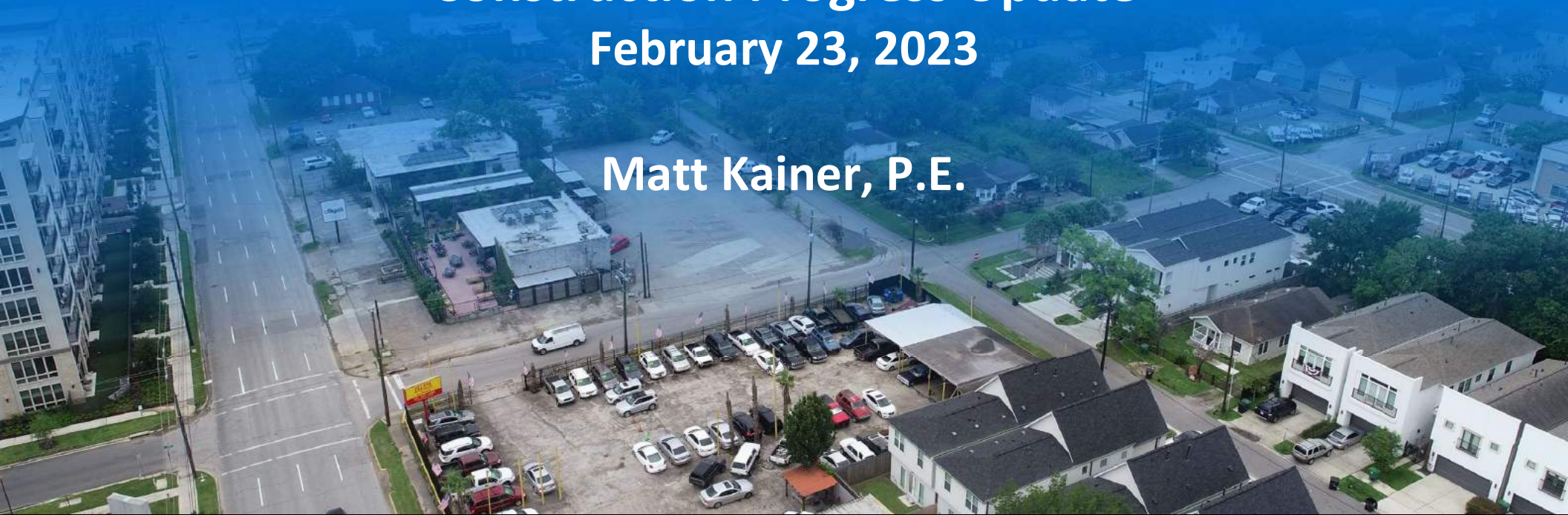




Shepherd Drive, Durham Drive, and Selected Cross Streets Reconstruction Project Construction Progress Update February 23, 2023

Matt Kainer, P.E.



PROJECT OVERVIEW



- Shepherd Dr. & Durham Dr. from 15th St. – IH-610
- Includes 15th, 16th, 18th, 19th, 20th, & 24th St.
- SER Construction Partners, LLC
- \$50,431,020.89



PROJECT OVERVIEW



- Notice to Proceed: April 18, 2022
- 1,008 Calendar Days (~33 Months)
- CEI Team – CDM Smith, Quiddity Engineering, McDonough Engineering, and Geotest Engineering

PROJECT PROGRESS



- Paving activities continuing on Shepherd, Durham, & X-Streets

- Phase 1 water line construction nearing completion

- Silva Cell installations continuing

- Driveways, sidewalks, and ramps being placed



PROJECT PROGRESS



~850 LF of Sanitary Sewer



PROJECT PROGRESS



~7,000 LF of Water Main



PROJECT PROGRESS



~4,470 LF of Storm Sewer

~111 Storm Sewer Inlets & Manholes



PROJECT PROGRESS



~13,050 SY of Pavement



PROJECT PROGRESS



~2,363 SY Driveways, Sidewalks, & Intersections



PROJECT CHALLENGES - UTILITIES



- CenterPoint Electric – overhead power poles
- CenterPoint Gas – 6” IP line under Shepherd
- AT&T, Verizon/MCI, Crown Castle, & Comcast



PROJECT CHALLENGES - UTILITIES



PROJECT CHALLENGES – UNKNOWNNS



UPCOMING ACTIVITIES



- Shepherd & Durham - Paving
- Storm sewer and inlet installation on 18th St.
- Continuing streetscape construction



Silva Cell Installations

MEMORIAL HEIGHTS
REDEVELOPMENT AUTHORITY

CDM
Smith

QUIDDITY
ENGINEERING



Silva Cell Installations

MEMORIAL HEIGHTS
REDEVELOPMENT AUTHORITY

CDM
Smith

QUIDDITY
ENGINEERING



Silva Cell Installations

MEMORIAL HEIGHTS
REDEVELOPMENT AUTHORITY

CDM
Smith

QUIDDITY
ENGINEERING



Silva Cell Installations



Being Good Neighbors



Dealing With Challenging Neighbors



Delivering a Quality Product for MHRA





QUIDDITY
ENGINEERING



MEMORIAL HEIGHTS
REDEVELOPMENT AUTHORITY

CDM
Smith

QUESTIONS?

www.ShepherdDurham.com